



RECP #: 752845

RECORDED 5/8/2019 AT 1:20 PM BK# 2620 PG# 1887
Debra K. Lee, CLERK OF LARAMIE COUNTY, WY PAGE 1 OF 1

STATE OF WYOMING CORNER RECORD

(In compliance with the CORNER PERPETUATION AND FILING ACT, Wyoming Statutes, 1997 Section 33-29-140, et. seq., and the Rules and Regulations of the Board of Registrations for Professional Engineers and Professional Land Surveyors)

SOUTHEAST CORNER SECTION 24, T. 18 N., R. 63 W., 6TH P.M., LARAMIE COUNTY, WYOMING

GLO: SET A SANDSTONE 24X16X4, 18 IN. DEEP, WITH 2 MARKS ON THE SOUTH AND 4 ON THE NORTH EDGES FOR CORNER TO SECTIONS, 19, 24, 25, 30.

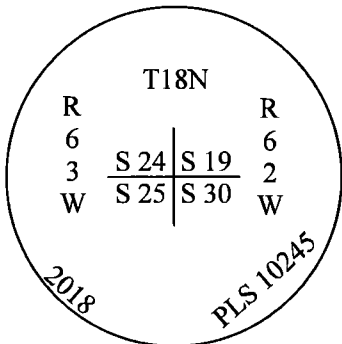
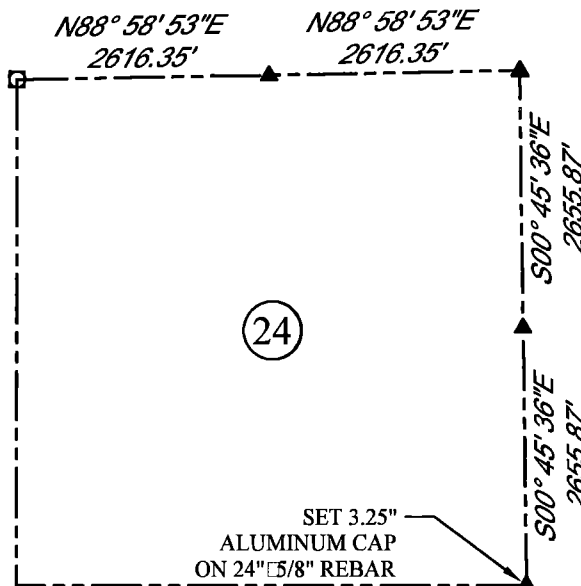
FOUND: NOTHING. SET ALUMINUM CAP AT PROPORTIONATE (SINGLE) DISTANCE.



SCALE: NONE

NORTH DETERMINED BY
G.P.S OBSERVATIONS

SET 3.25" ALUMINUM CAP ON #5 REBAR, 7" ABOVE SURFACE, STAMPED AS SHOWN. PLACED A SMALL MOUND OF STONES ON THE SOUTH SIDE OF SET CORNER, SET A FIBERGLASS ROD ON THE NORTH SIDE.



LEGEND:

- FOUND BLM CAP
- FOUND USFS CAP
- FOUND STONE
- FOUND PRIVATE MONUMENT
- ◆ CALCULATED POSITION
- ▲ SET MONUMENT (LS10245)
- SECTION LINE

DATE OF FIELD WORK: 10/3/2018 OFFICE REFERENCE: MERIDEN

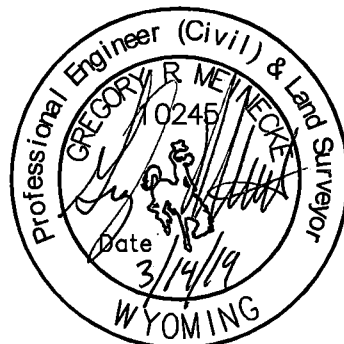
CROSS INDEX DIAGRAM

	1	2	3	4	5	6	7	8	9	10	11	12	13	14	15	16	17	18	19	20	21	22	23	24	25	
A																										
B																										
C			6																							
D					5																					
E						4																				
F							3																			
G								2																		
H									1																	
I																										
J																										
K																										
L																										
M																										
N																										
O																										
P																										
Q																										
R																										
S																										
T																										
U																										
V																										
W																										
X																										
Y																										
Z																										
	1	2	3	4	5	6	7	8	9	10	11	12	13	14	15	16	17	18	19	20	21	22	23	24	25	

WOOD
2615 AVIATION DRIVE
SHERIDAN, WY 82801
PH: 307-675-6400



THIS CORNER RECORD WAS
PREPARED BY ME OR UNDER
MY DIRECTION AND
SUPERVISION,
SEAL AND SIGNATURE



CORNER NAME: SOUTHEAST SECTION: 24 T. 18 N., R. 63 W. ; 6TH P.M. CROSS-INDEX # R-25
SBRPELS/PLSW: MARCH 1994; PLSW JANUARY 1998